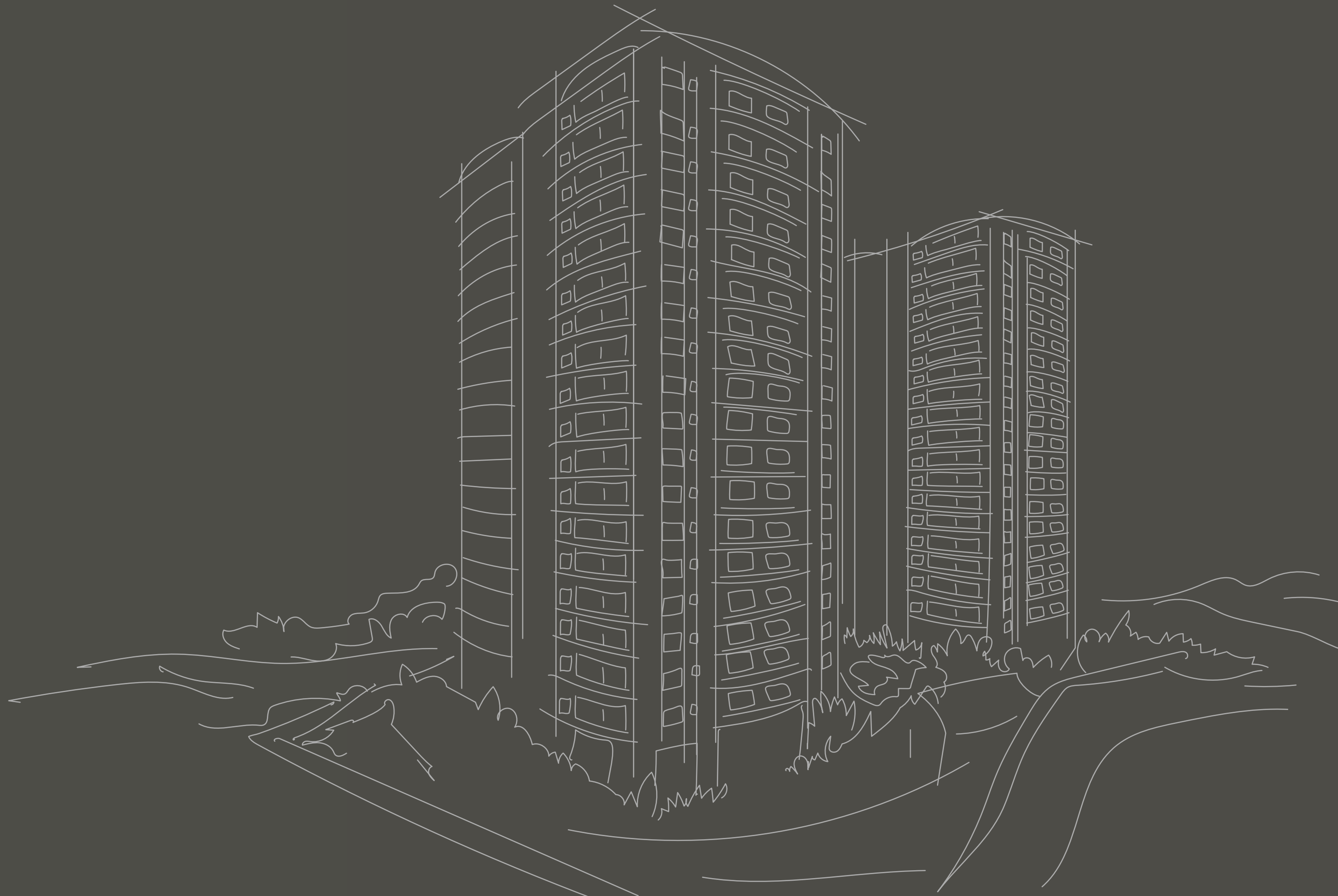




svasa[®]
H O M E S

Inspired Living

BASAVANAGUDI, BENGALURU, INDIA



*Om Purnamadah Purnamidam
Purnatpurnamudacyate
Purnasya Purnamadaya
Purnamevavasisyate*

That is Complete. This is Complete.
From Completeness is Completeness Born.
If Completeness is Removed from Completeness,
What Remains is Completeness.

The Isha Upanishad, regarded as the first among the Upanishads, begins with the above shloka. A philosophy that forms the backbone of Vedic knowledge.



THE LORE OF ANCIENT
WISDOM WHISPERS A
PROFOUND WAY OF LIFE
HIDDEN IN THE DEPTHS
OF TIME.

SVASA Jivana Chakra

The diagram represents the Svasa Jivana Chakra (Wheel of Life), a concept that symbolizes the eternal balance and harmony between the eight most fundamental aspects of living. Attaining equilibrium between each aspect leads to holism, completeness, and absolute fulfillment.

Parisara – Environment

Kamadhenu ~ the Cow

Parisara refers to the right physical environment which acts as a crucial catalyst for our collective progress. In Hindu literature, the Cow is also considered the greatest giver of all.

Anuraaga – Romance

Shuka ~ the Parrot

Anuraaga is said to be the mount of Kamadeva, the God of love, representing desire and passion. Often seen in pairs, the Parrot symbolizes the vivacious spirit of love.

Leela – Recreation

Mruga ~ the Deer

Leela depicts play or recreation. It signifies the aspect of leisure and play in one's life. The inclusion of the Deer in the Chakra stresses on the importance of finding balance between work and recreation.

Sattva – Community

Kurma ~ the Tortoise

Sattva represents active community life and nurturing bonds with friends and family. The Tortoise symbolizes long-term stability one gains from fostering strong relationships with loved ones.

Vikaasa – Growth

Gandabherunda ~ the Two-Headed Eagle

Vikaasa symbolizes strength and growth, alluding to the ceaseless development and betterment of the self. The Gandabherunda, or similar forms, can often be seen in royal insignias of South India.

Aarthika – Wealth

Padma ~ the Lotus

Aarthika represents opulence, wealth, and prosperity. In Hinduism, the Lotus is depicted as the seat of Lakshmi, the Goddess of abundance, and is one of the most popular motifs in South Indian design.

Praana – Health

Sanjeevani ~ the All-Curing Herb

Praana symbolizes good health and healing. In Hindu mythology, the Sanjeevani herb is said to be capable of curing even the severest of ailments.

Karya – Career

Ashwa~ the Horse

Karya embodies the absolute power of progress, focus, and efficiency. Traits of the Horse have greater relevance in contemporary society, especially in one's work and career.



A Life of Profoundness Revived from Ancient Wisdom

Modern lifestyles give rise to conditions that disconnect us from our higher nature. Our endless pursuits involving time and energy make lives full but not ultimately fulfilling. According to the Vedas, there exists a way of life preserved in ancient wisdom. A form of living that invokes profoundness, completeness, and true meaning. To actualize the attainment of life's greater purposes, discover these ancient philosophies revived from lost Vedic lore.



Purnatva

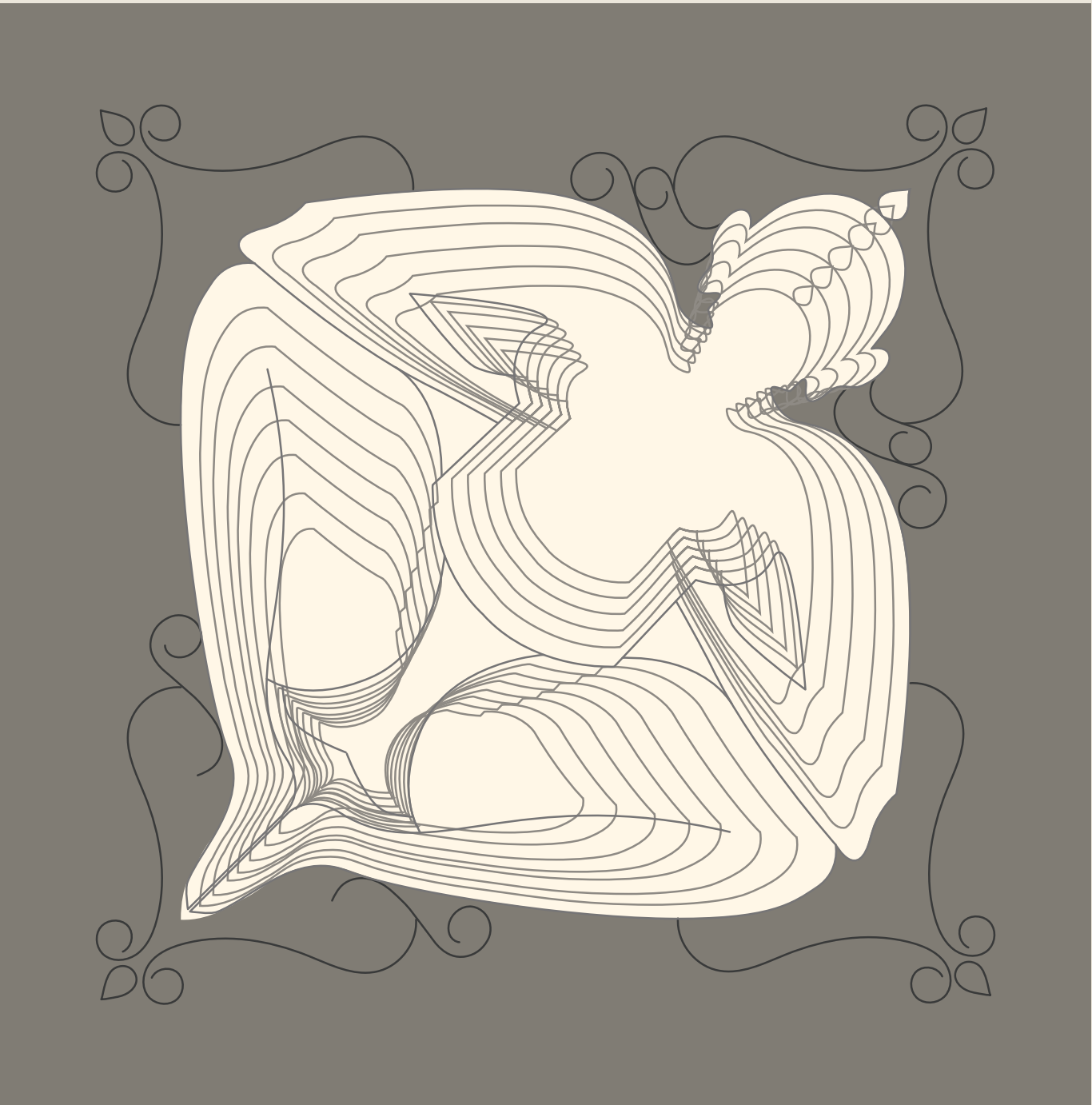
Purnatva ~ purna(completeness) + tva(principle)

In yogic philosophy, the concept of Purnatva refers to absolute completeness which is the true nature of all things. Finding fulfillment, wholeness, and perfection in every aspect of life is a central doctrine of Vedic thinking.

Rajarishi

Rajarishi ~ raja(king) + rishi(sage)

According to Arthashastra and Indian mythology, a Rajarishi is an economic and spiritual leader fused together in one who rules an empire with the acumen of a king and the benevolence of a sage. A Rajarishi's life, work, and actions represent the highest examples even to this day.



Vaastu Shastra

The principles of Vastu Shastra, literally meaning science of architecture, includes various ancient scientific guidelines to craft living spaces in harmony with the five essential elements (*Jal, Akash, Agni, Vayu and Prithvi*) creating abundant natural energies and balance for the spirit.

The ancient wisdoms portrayed above have contributed to the creation of Svasa philosophy. From the teachings found in these concepts of timeless knowledge, Svasa has emerged as a living reality to enrich the experience of living.

The Philosophy of SVASA

svasa ~ breath

The simple act of breathing holds in it life's greatest answers. With its roots in the Vedas, Svasa represents the eternal exchange every living being undergoes in every moment. Being the only philosophy practised by a plant as much as a human, Svasa suggests that in order to receive we must first give. That in order to gather, we must first let go. Each breath we take stands testament to this profound philosophy, invoking inspiration of the highest extent. Svasa comprises four core principles on which the entire philosophy stands.



Giving Spontaneously

The more one gives, the more one gets. Sharing wealth, knowledge, and abundance in a natural and spontaneous manner uplifts the self to a new position of relevance.

Making An Impact

What goes around comes around. Generating impact that touches the lives of countless others for the greater good also impacts the self multi-dimensionally.

Nurturing A Vision

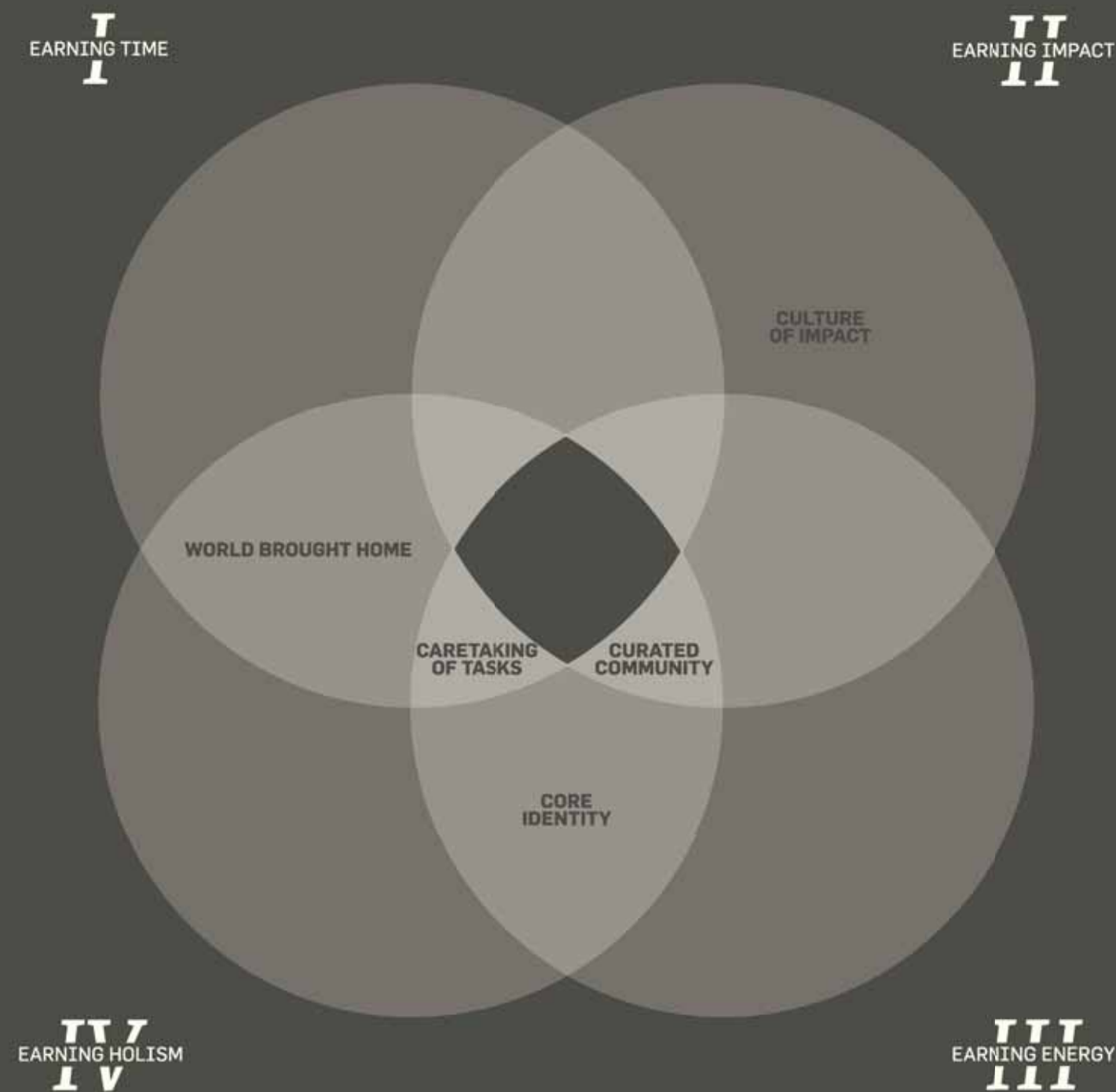
Real inspiration manifests in the form of a grand vision. Nourishing this vision every day and seeing it through is supremely important for a life of true meaning.

Learning For Life

The immortal self is an eternal learner. Gathering knowledge incessantly and acquiring new perspectives constantly bring a phenomenal expansion of horizons.

The Fourfold Gains of SVASA

The timeless principles of Svasa are designed to naturally empower all areas of life. They resonate with relevance more than ever before, enabling transformation of individuals and families to a new plane of existence. Extracting these principles from Vedic scriptures and introducing them to contemporary living spaces culminate in unimaginable privileges.



Svasa Living constitutes of the 4 fundamental principles depicted as individual circles. These circles are interconnected with each other and come together to substantiate the philosophy of Svasa. Each principle contains offerings common across one or more principles.

EARNING TIME

Time is inarguably life's most valuable resource. Its shortage prevents us from acquiring and experiencing more. Minimizing time wastage for activities worth one's potential gives life a colossal transformation.

BENEFITS:
self-discovery | mindspace for new ideas | time to maintain relationships | time for learning

EARNING IMPACT

Giving provides more joy than taking. The mindset of going beyond the limitations of personal agendas and interests to bring positive change that affects multiple lives for the greater good is among the foremost outcomes of Svasa living.

BENEFITS:
imbibing the right value system | making a meaningful difference | sense of fulfilment

EARNING ENERGY

Energy is an indispensable fuel, much like time. Conserving energy for higher purposes instead of its dissipation on mundane workflows leads to an upsurge of energy levels required to meet life's most significant milestones.

BENEFITS:
discovering new inspiration | pursuit of true passion | higher levels of productivity

EARNING HOLISM

Holism is an existential condition in which every facet of life is nurtured and paid equal attention to. From work to recreation, individual time to family time, no dimension is neglected and coexists with each other in perfect balance.

BENEFITS:
sense of meaning | physical & emotional balance | enhanced clarity

SVASA Homes

Born of an epiphanic inspiration, Svasa Homes is a concept of living that enables attainment of life's higher meaning. Extracted from ancient wisdoms, these immortal principles bring you elevated dimensions of productivity and fulfillment. Designed for impact makers and their families, discover an uplifted way of living through these exalting features.

CURATED COMMUNITY

Live among exemplary individuals whose accomplishments inspire awe. Be one with a community whose residents have been handpicked for each other. Sharing a common mindset ensures the community collectively helps each other grow, collaborate, and prosper.

CULTURE OF IMPACT

Be part of a collective that makes the world a better place. Explore an environment nurturing the right conditions to harness improvements through philanthropic initiatives of immense social relevance created for the greater good.

CORE IDENTITY

Reawaken your essence by going back to your roots. Appreciate the historic relevance of culture and lost stories of ancient times. Svasa Homes is designed to inspire your reunion with heritage and its deepest implications.





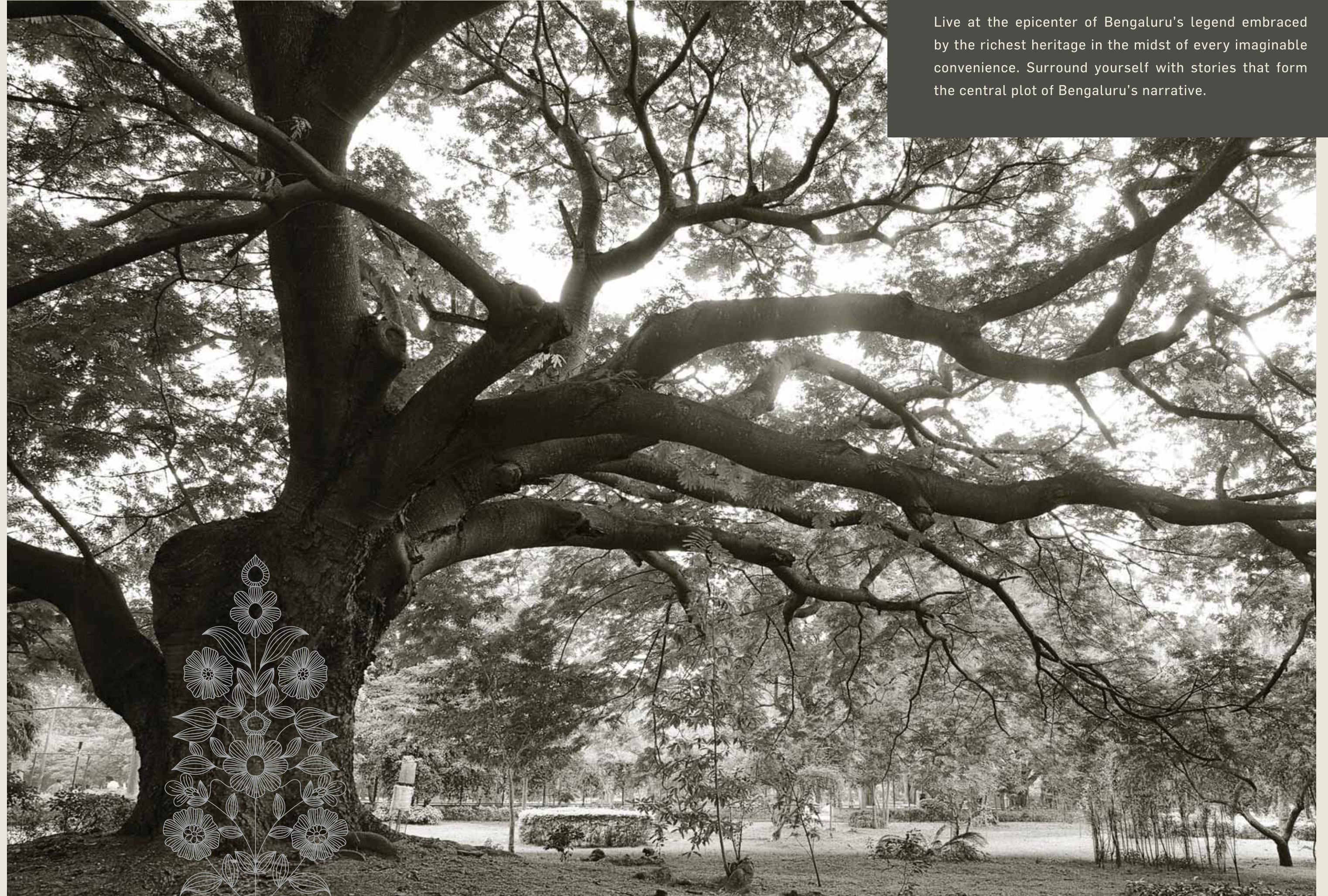
TIMELESS HERITAGE

True heritage is more than historic statuettes, traditional clothing, or cultural memorabilia. True heritage is timeless. Handed down through generations, true heritage is coming in tune with one's own roots. From sophisticated taste and superior craftsmanship to a thirst for perfection, reawakening integral aspects of our ethos in celebration of the higher meaning of heritage is part of the Svasa philosophy.

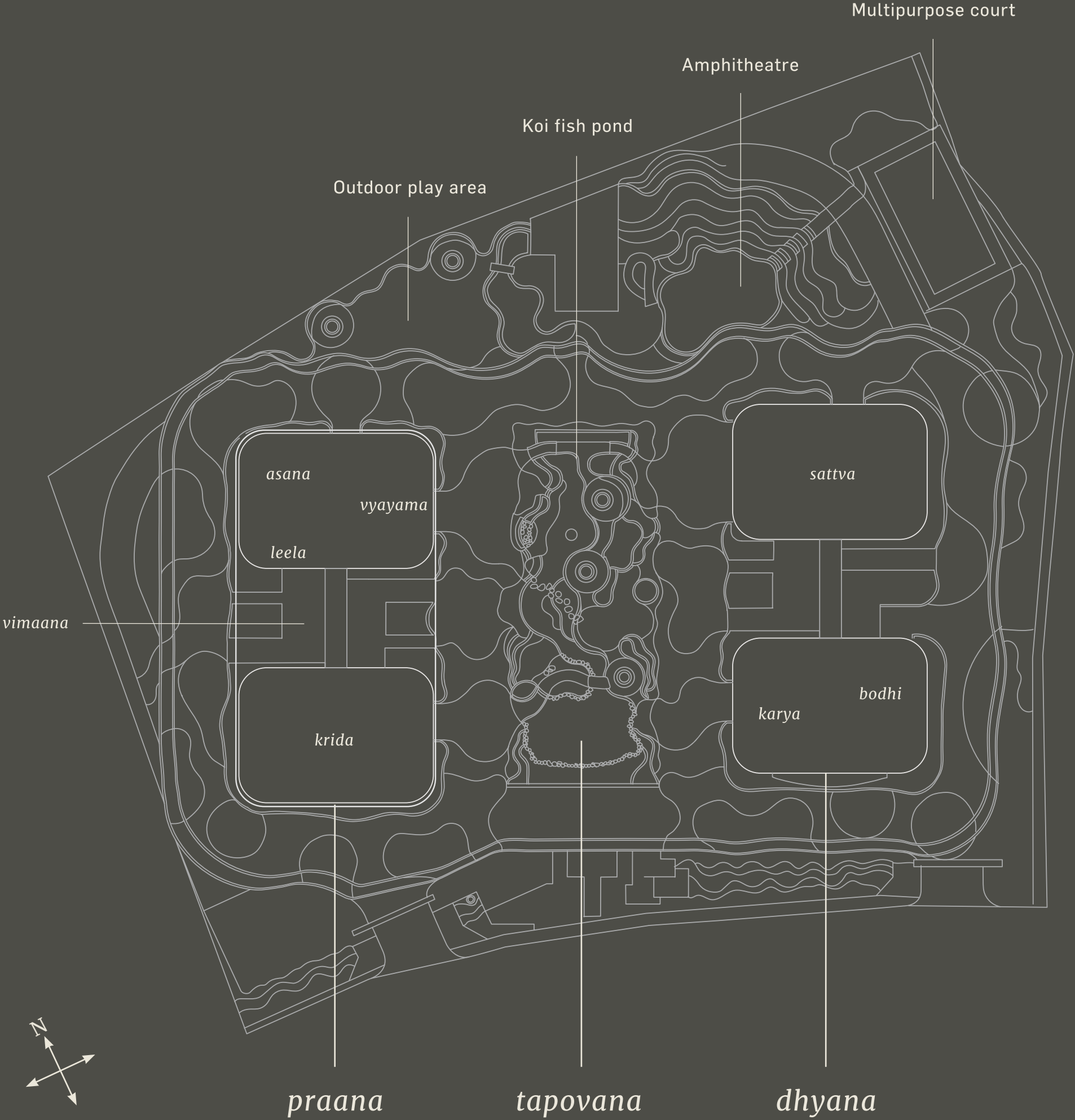
AT THE HEART OF BASAVANAGUDI
COURTYARD HOME DESIGN
THE GARDENS
STUDIO SPACE
ANCIENT INDOOR GAMES

At The Heart Of Basavanagudi

Live at the epicenter of Bengaluru's legend embraced by the richest heritage in the midst of every imaginable convenience. Surround yourself with stories that form the central plot of Bengaluru's narrative.



Courtyard Home Design

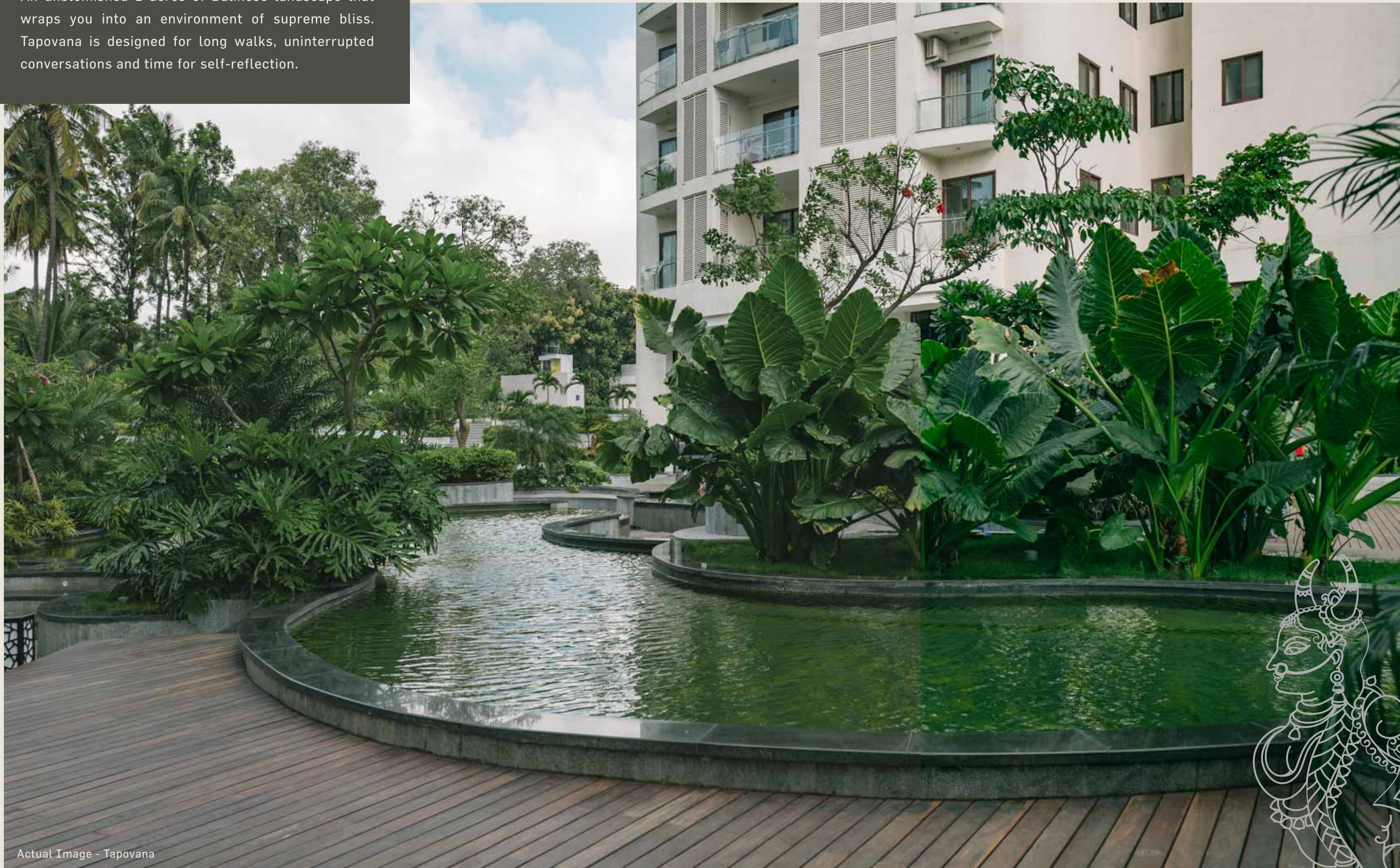


Discover a 4500-year-old Vedic courtyard home design featured for the first time in any modern high-rise living community. According to ancient architectural science, this design brings utmost balance between social and personal life.

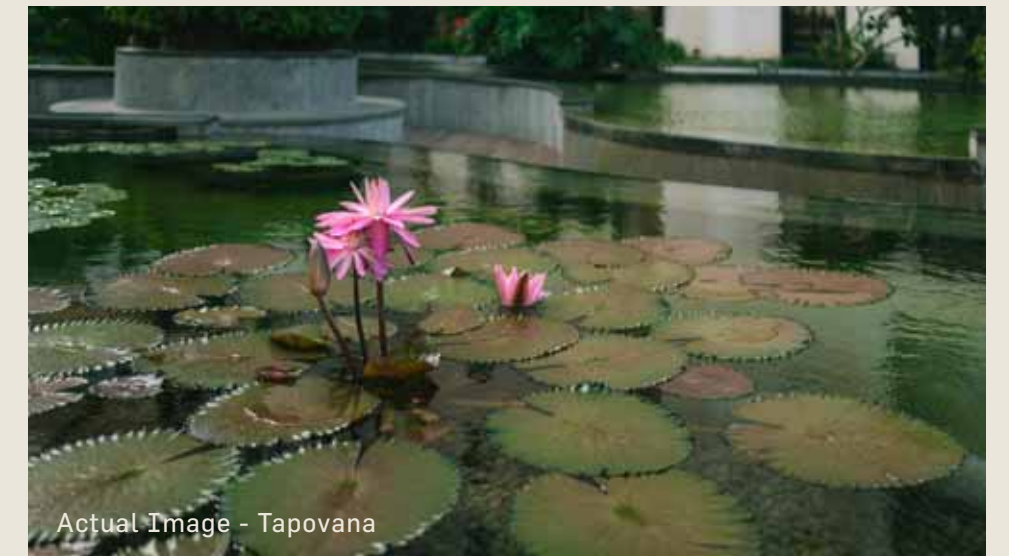


The Gardens

An unblemished 2 acres of Balinese landscape that wraps you into an environment of supreme bliss. Tapovana is designed for long walks, uninterrupted conversations and time for self-reflection.



Actual Image - Tapovana



Actual Image - Tapovana



Studio Space

Reconnect with yourself through the ancient discipline of yoga. Attain prime physical wellness with the help of highly-trained yoga instructors at the Asana studio. It also functions as a screening theater showcasing your favourite films.



Actual Image -Asana

Ancient Indoor Games



Immerse in quality time with your children as they learn to play games from ancient times such as Kavade Aata, Alligullimane and more.



A wide-angle night photograph of a city skyline, likely Mumbai, India, viewed from an elevated position. In the foreground, a large, calm swimming pool reflects the city lights and the dark sky. The city lights are a mix of warm yellow and orange from residential buildings and cooler blue and white from commercial buildings and skyscrapers in the distance. The sky is a deep, dark blue. The overall mood is serene and sophisticated.

SEAMLESS LUXURY

Luxury is often thought to be about superior amenities and exquisite living conditions. However, the concept of luxury runs deeper than imagined. True luxury is having the privilege or mindspace to do what you want in life. True luxury exists above mere opulence, grace, and splendour to describe a lifestyle mundane wealth cannot acquire.

HEART OF THE CITY

CARETAKING OF TASKS

WORLD BROUGHT HOME

GREATER CEILING HEIGHT

LOUNGE

CURATED LIBRARY

INFINITY POOL

WORKOUT and PLAY

SVASA VIEW



In the Heart of the City

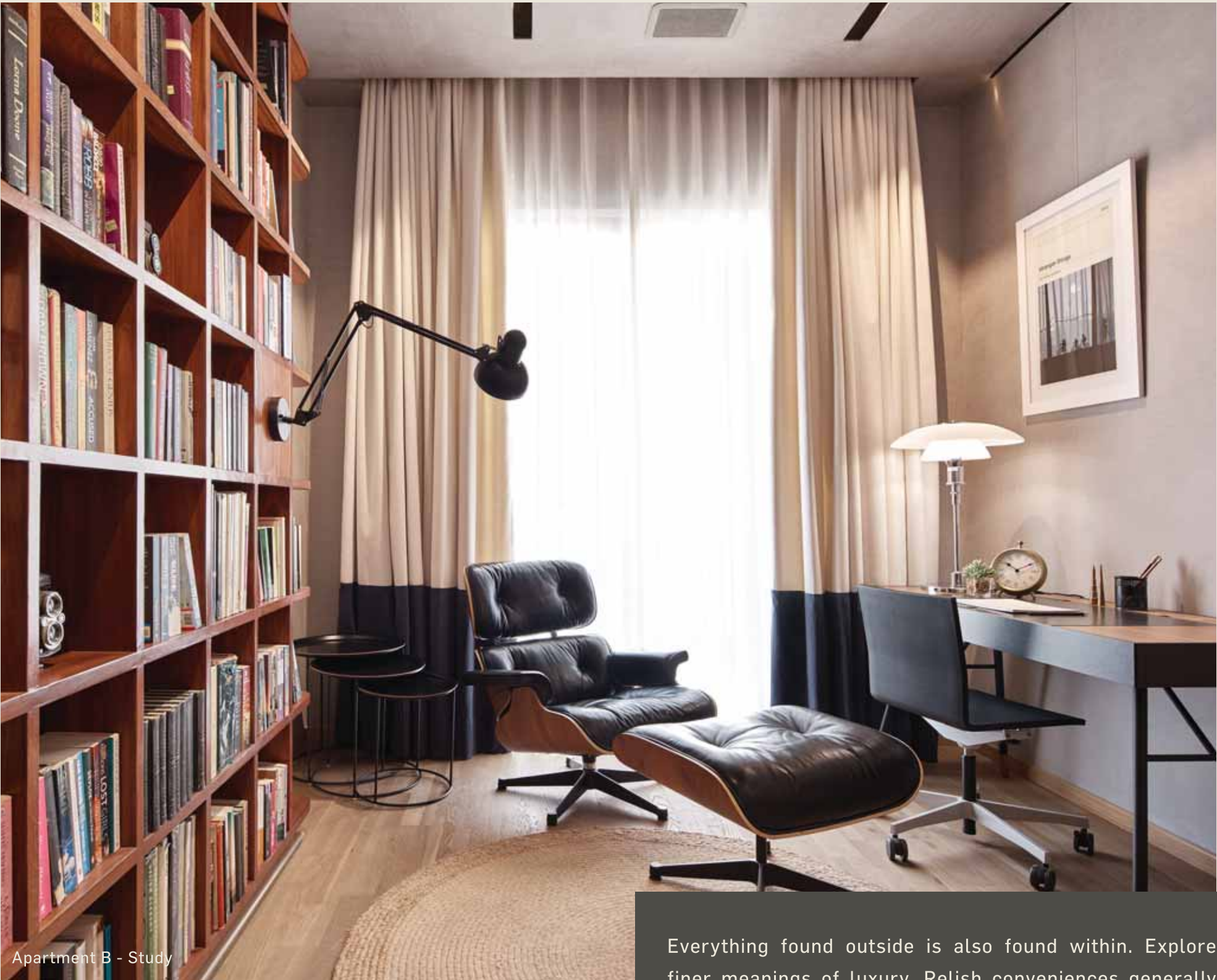
Being a breath away from the centre of the city comes with its own unique advantages for those who like to be on top of things. Enrich your city life with a supremely strategic location that offers better connectivity and flow.



Immerse in pursuits that matter to you most by delegating a range of tasks to professionals within Svasa Homes. Fulfill your big ideas while your tasks get completed with the highest levels of expertise, earning you invaluable time and energy.



Caretaking of Tasks



World Brought Home

Everything found outside is also found within. Explore finer meanings of luxury. Relish conveniences generally available outside residential premises brought to you exclusively within Svasa Homes.





Thinkers and innovators need more headspace. The floor-to-ceiling height of 10 feet 7 inches in every Svasa home is a luxury you can find nowhere else. The exceptional ceiling height allows for more exclusivity, freedom, and inspiration.

Greater Ceiling Height

Apartment B - Dining Area



Lounge

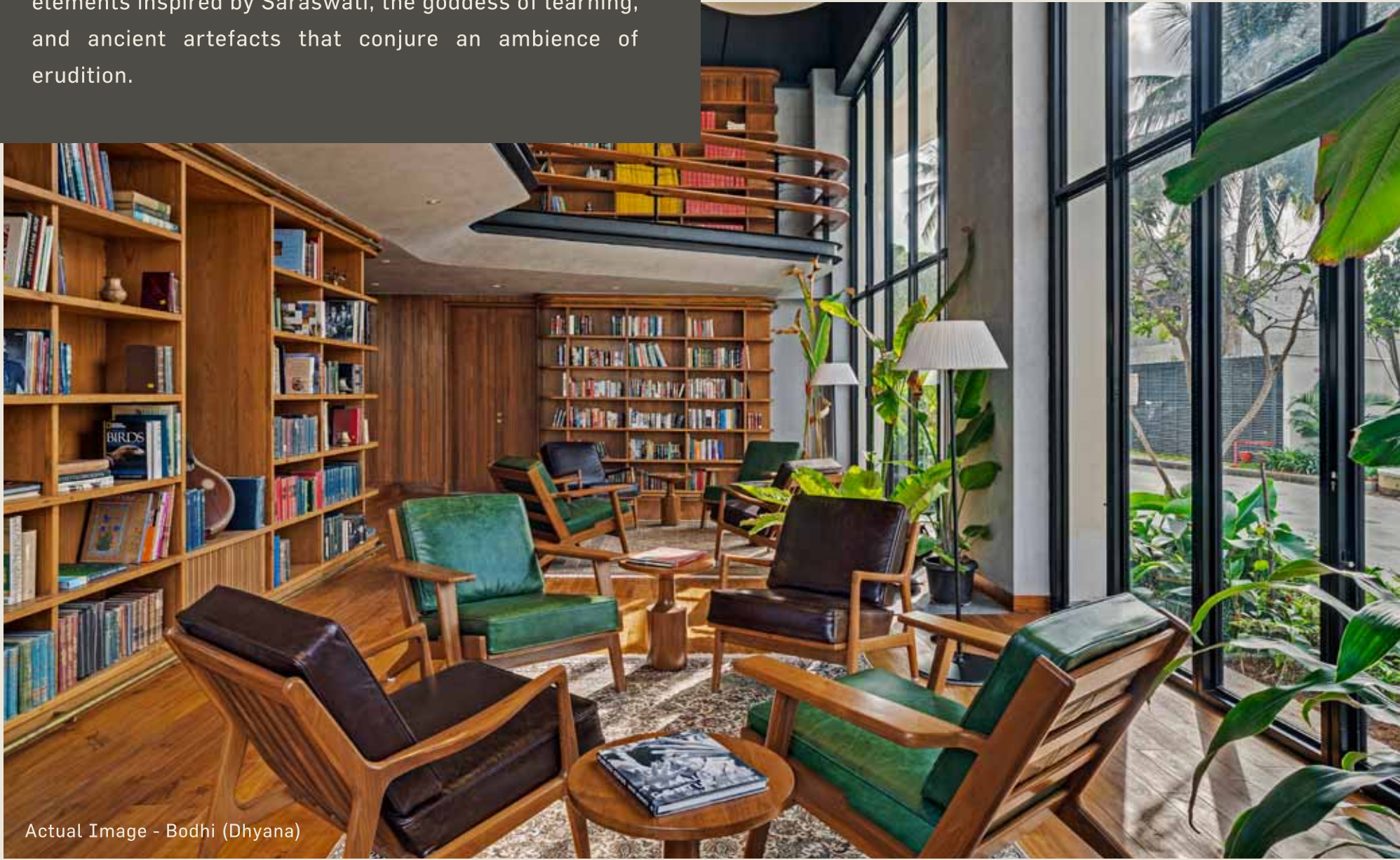
The Sattva lounge is an extension of your living room. Spend leisurely hours with yourself, engage in illuminating conversations with fellow residents, or simply draw inspiration from a collection of antiques on display. Welcome to a space crafted to fulfil your community life.



Actual Image - Sattva (Dhyana)

Curated Library

Leaf through over 2000 carefully curated books including research literature from top business schools like IMD, Switzerland. The Bodhi library is embellished with elements inspired by Saraswati, the goddess of learning, and ancient artefacts that conjure an ambience of erudition.



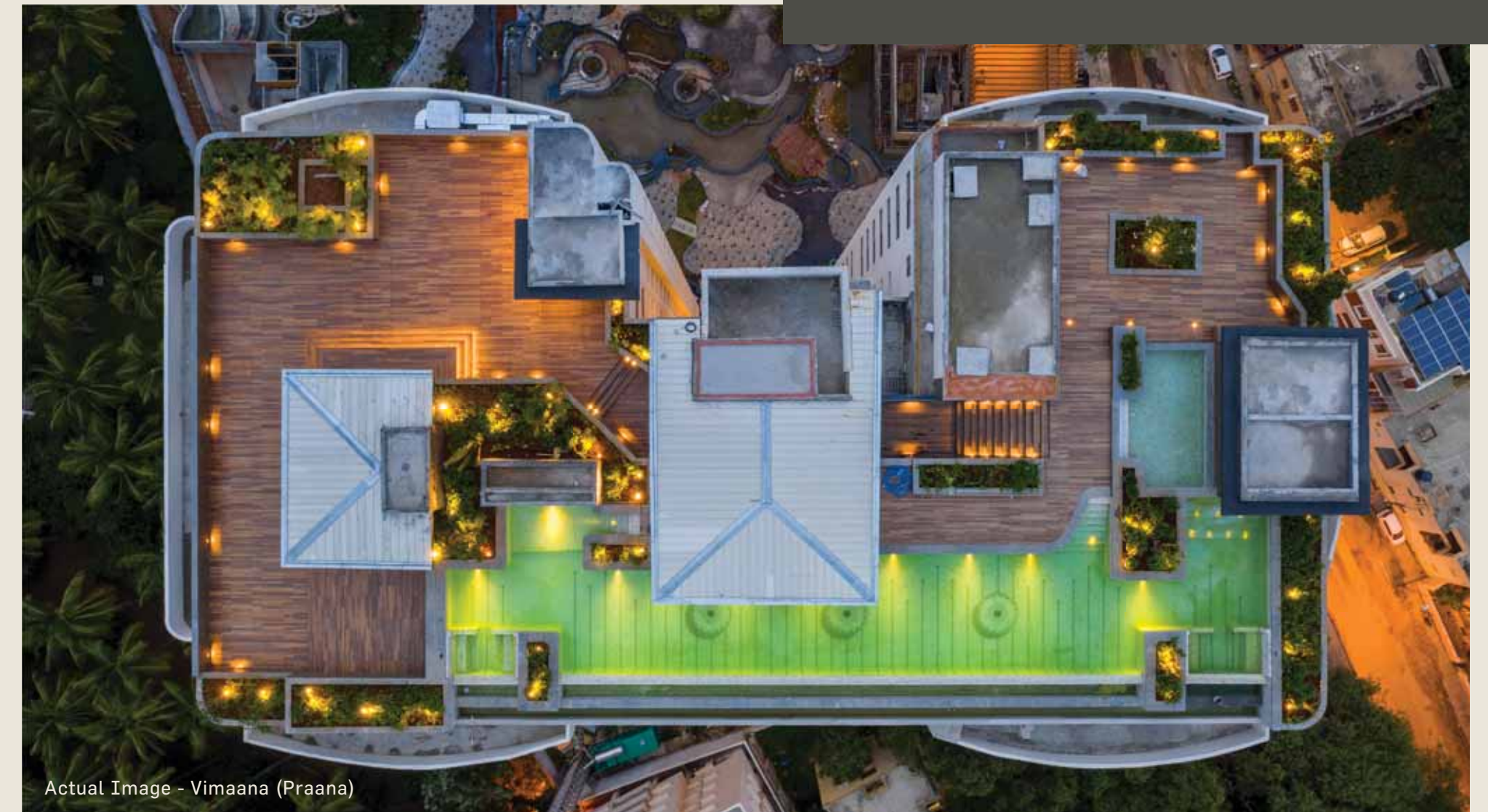
Actual Image - Bodhi (Dhyana)



Actual Image - Bodhi (Dhyana)

Infinity Pool

Bask in spectacular views at Vimaana, while immersed in the rooftop infinity pool featuring separate Jacuzzis for men and women, and a private changing room for women that seamlessly transitions into the pool.



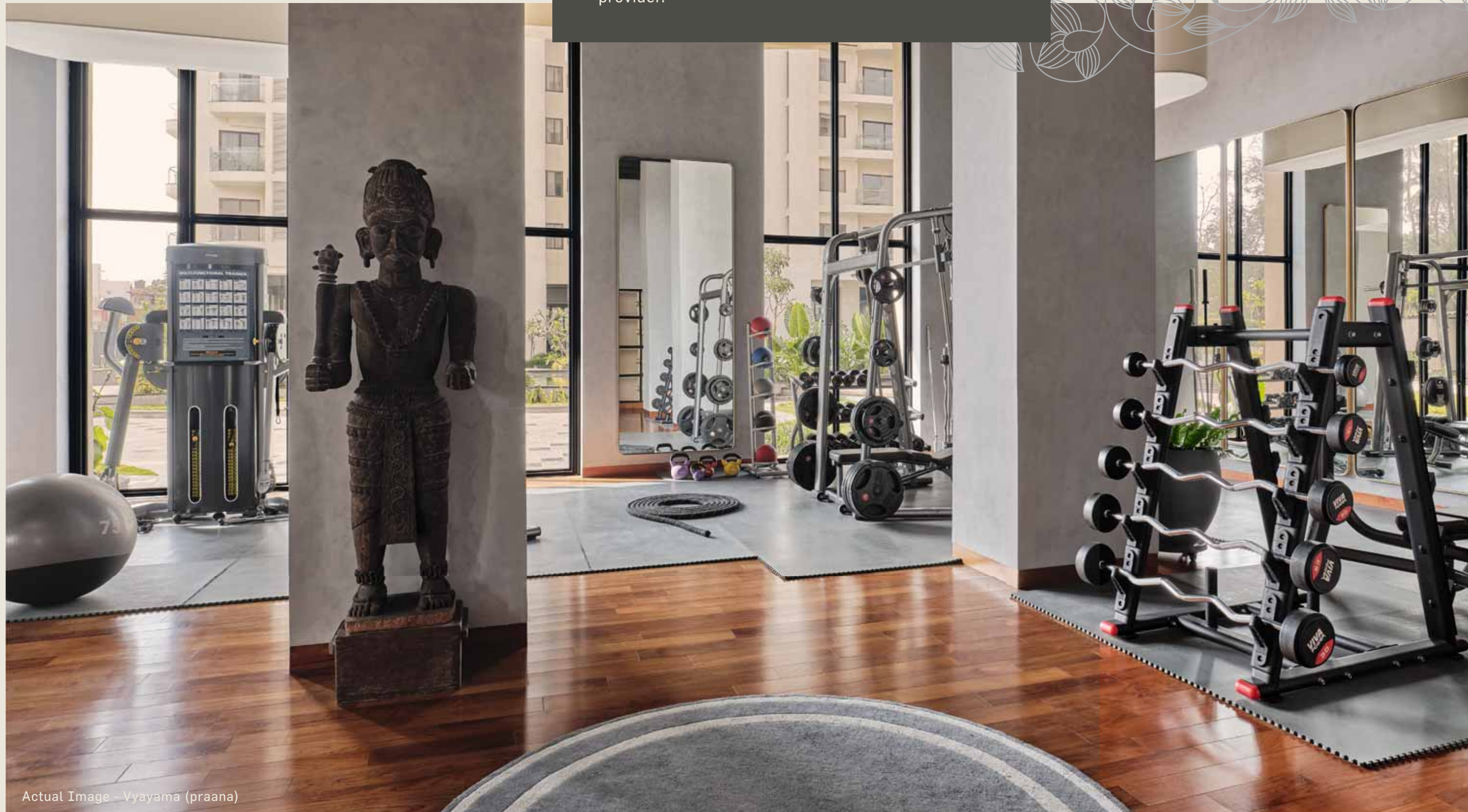
Actual Image - Vimaana (Praana)



Actual Image - Vimaana (Praana)

Workout and Play

The exclusive Vyayama gym features state-of-the-art equipment and professional instructors to help you in your journey of health and wellness. Svasa's state-of-the-art squash court is built by Syncotts International, the world renowned sports surface provider.



Actual Image - Vyayama (praana)



Artist's Impression - Krida

SVASA View

Preside over the breathtaking expanse of Bengaluru. With Ramakrishna Math right next door, the lush, tranquil and untainted views of the ashram filled with trees and foliage tuck you into a world of your own.





SELFLESS COMMUNITY

Community is beyond a mere collection of people coexisting together. The true definition of community includes an existence beyond the walls of one's living environment. It implies a level of concern and involvement that supersedes individual existence and encompasses everything in one's immediate ecosystem.

COMMUNITY

LOTUS PONDS

AMPHITHEATRE

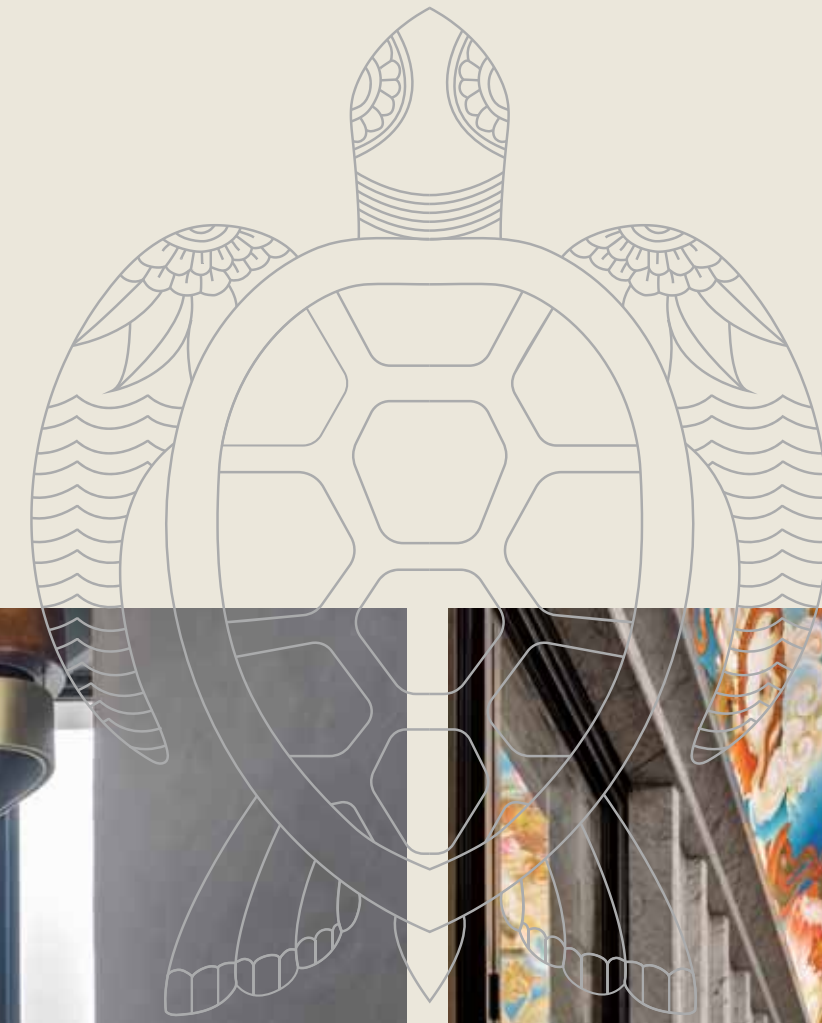
KIDS PLAY AREA

LEISURE LOUNGE

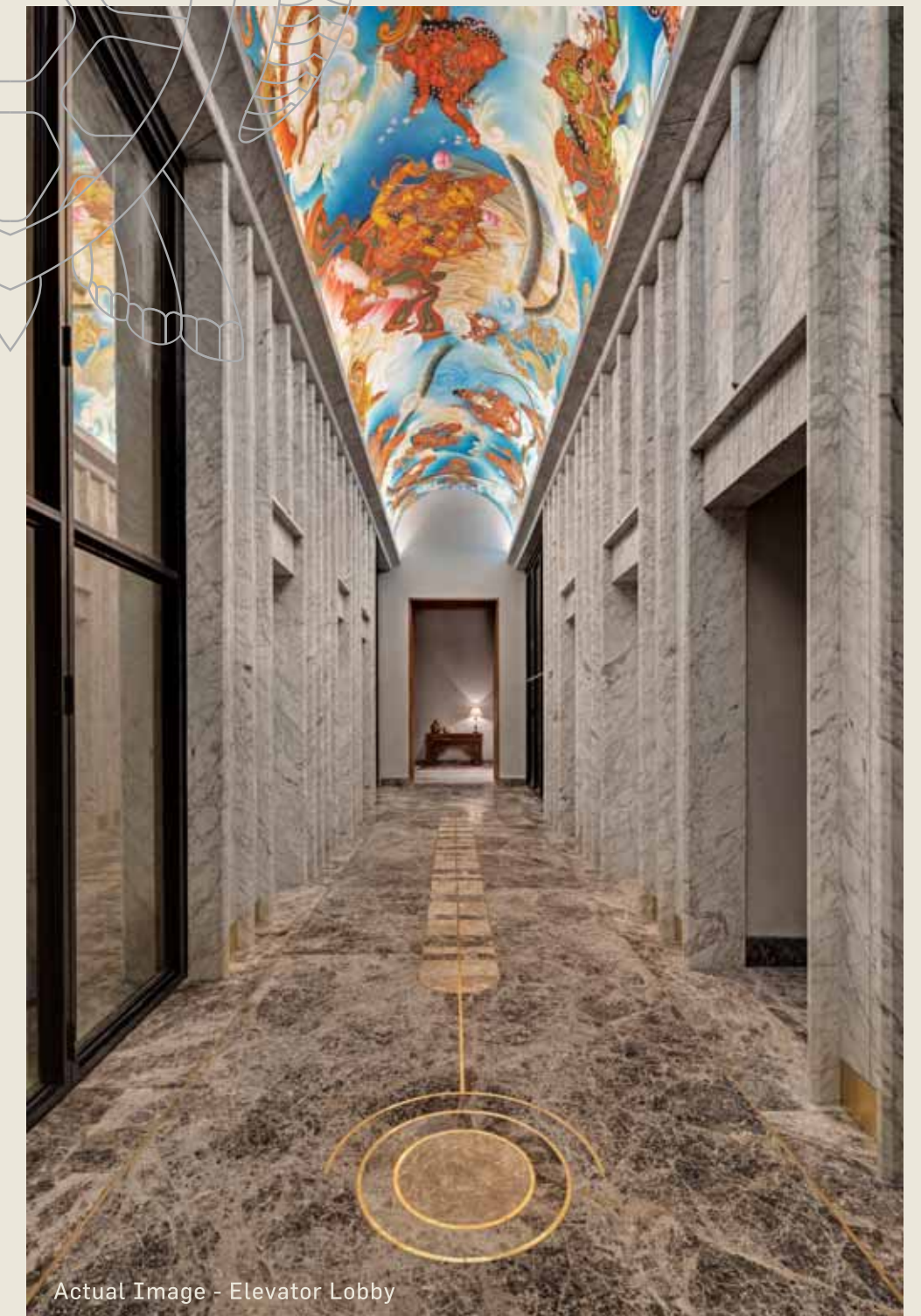
COWORK + NETWORK

Community

Socialize with like-minded residents across 36,000 sq ft of carefully designed spaces adorned with antique decor and state-of-the-art facilities for an unparalleled community experience.



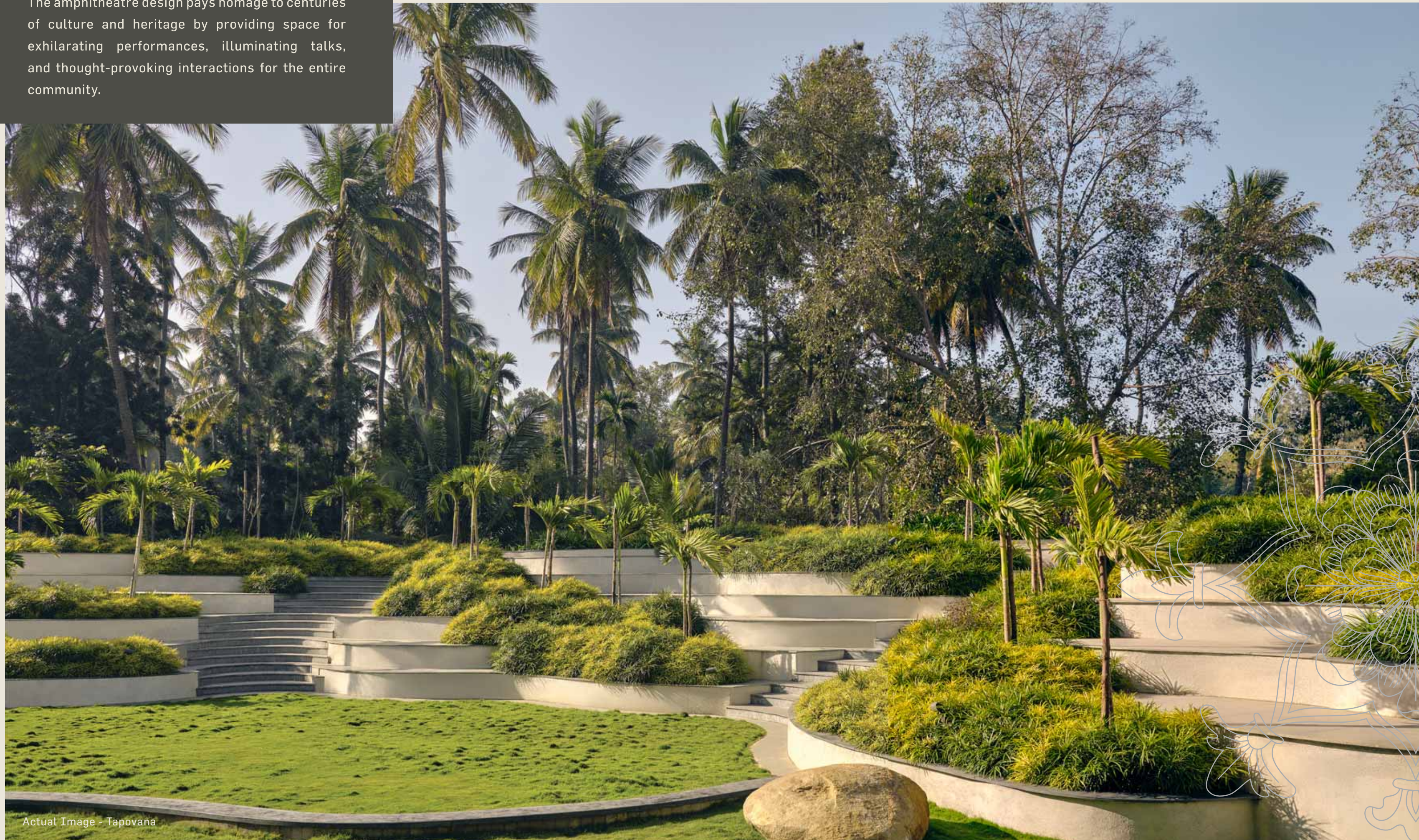
Actual Image - Sattva (Dhyana)



Actual Image - Elevator Lobby

Amphitheatre

The amphitheatre design pays homage to centuries of culture and heritage by providing space for exhilarating performances, illuminating talks, and thought-provoking interactions for the entire community.



Actual Image - Tapovana

Leisure Lounge

Engage in quality time with family and friends over invigorating sessions of snooker, table tennis and foosball at the Krida lounge. Achieve equilibrium in a recreational space replete with a myriad enthralling activities.



Actual Image - Krida (Praana)



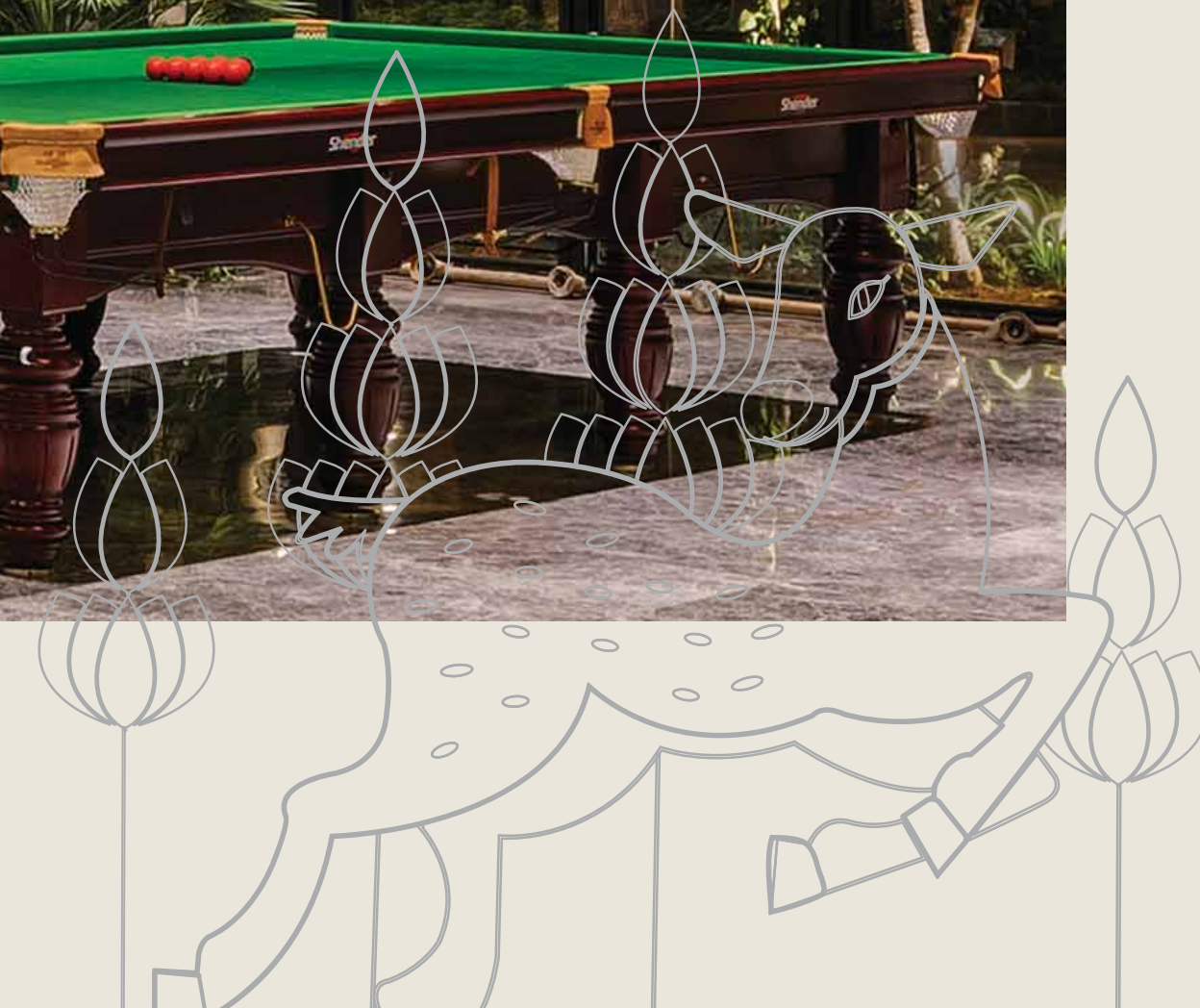
Actual Image - Leela (Praana)



Actual Image - Leela (Praana)

Situated in the mezzanine above the yoga studio, Leela is the indoor children's play area where your little ones can let their creativity flourish as they remain within your view.

Kids Play Area



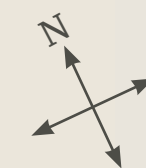
Cowork + Network

Karya is a dedicated business lounge that includes a private meeting room, conference room, discussion tables, and coworking spaces, enabling you to bring work closer.



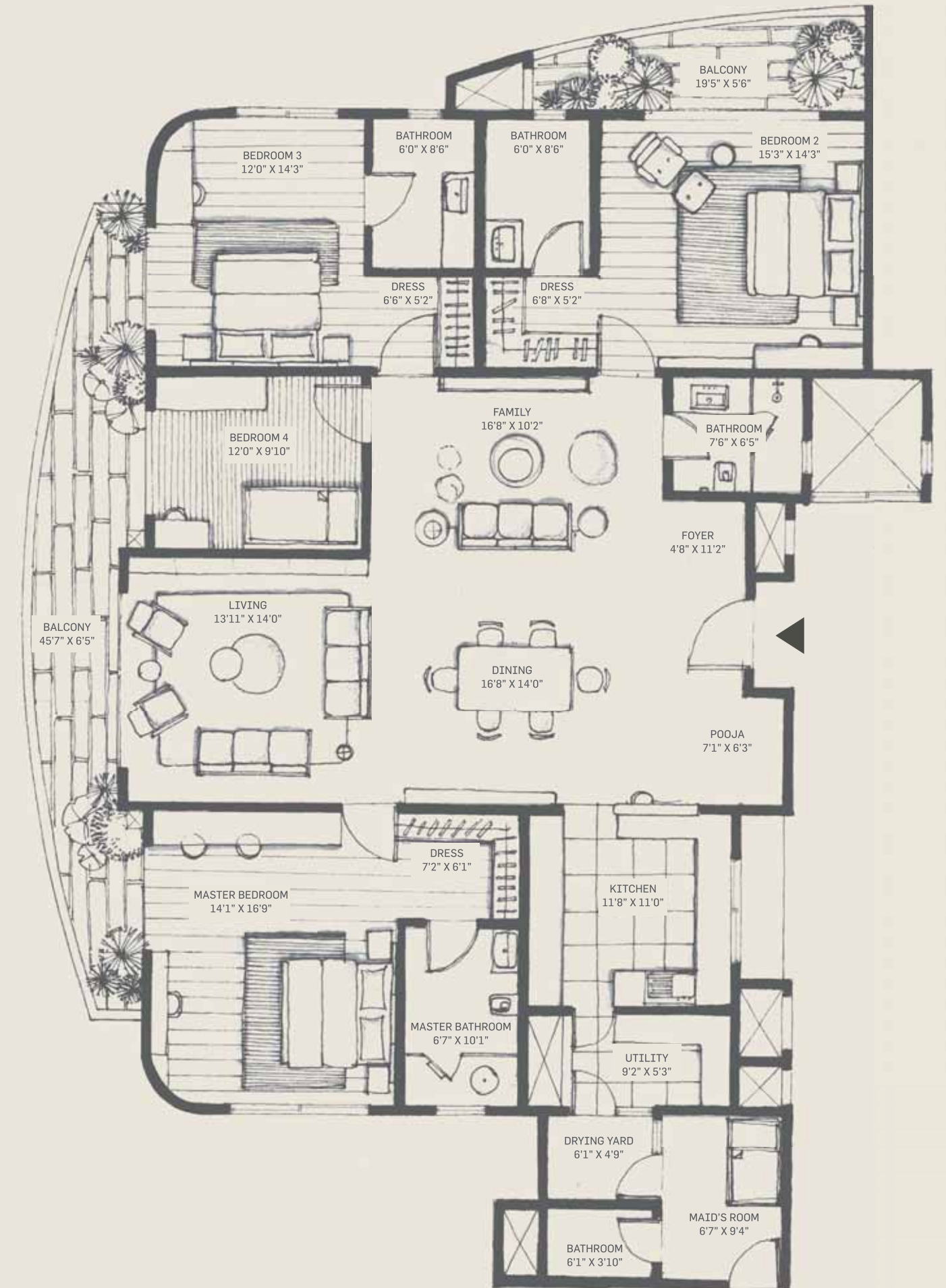


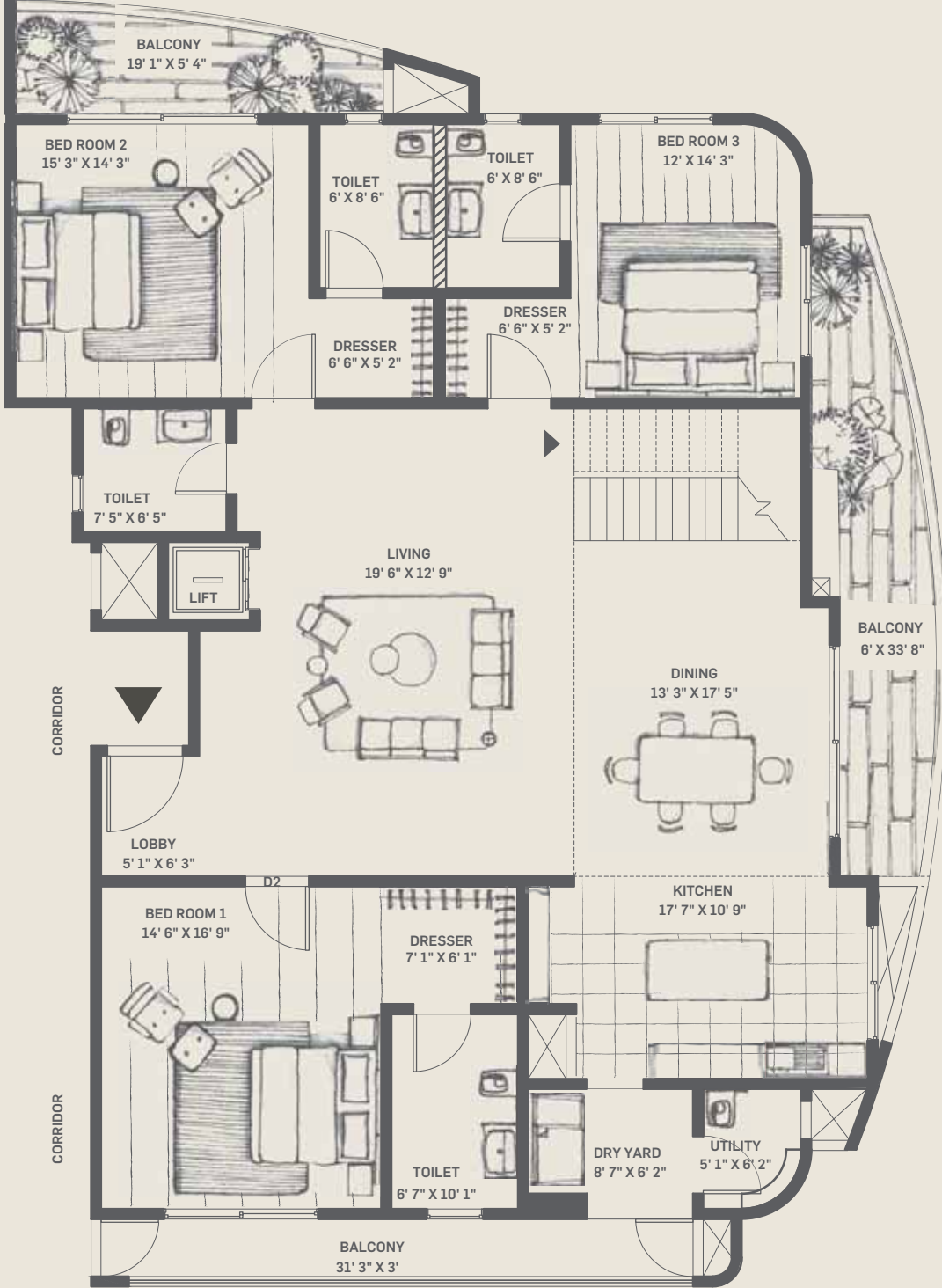
FLOOR PLANS



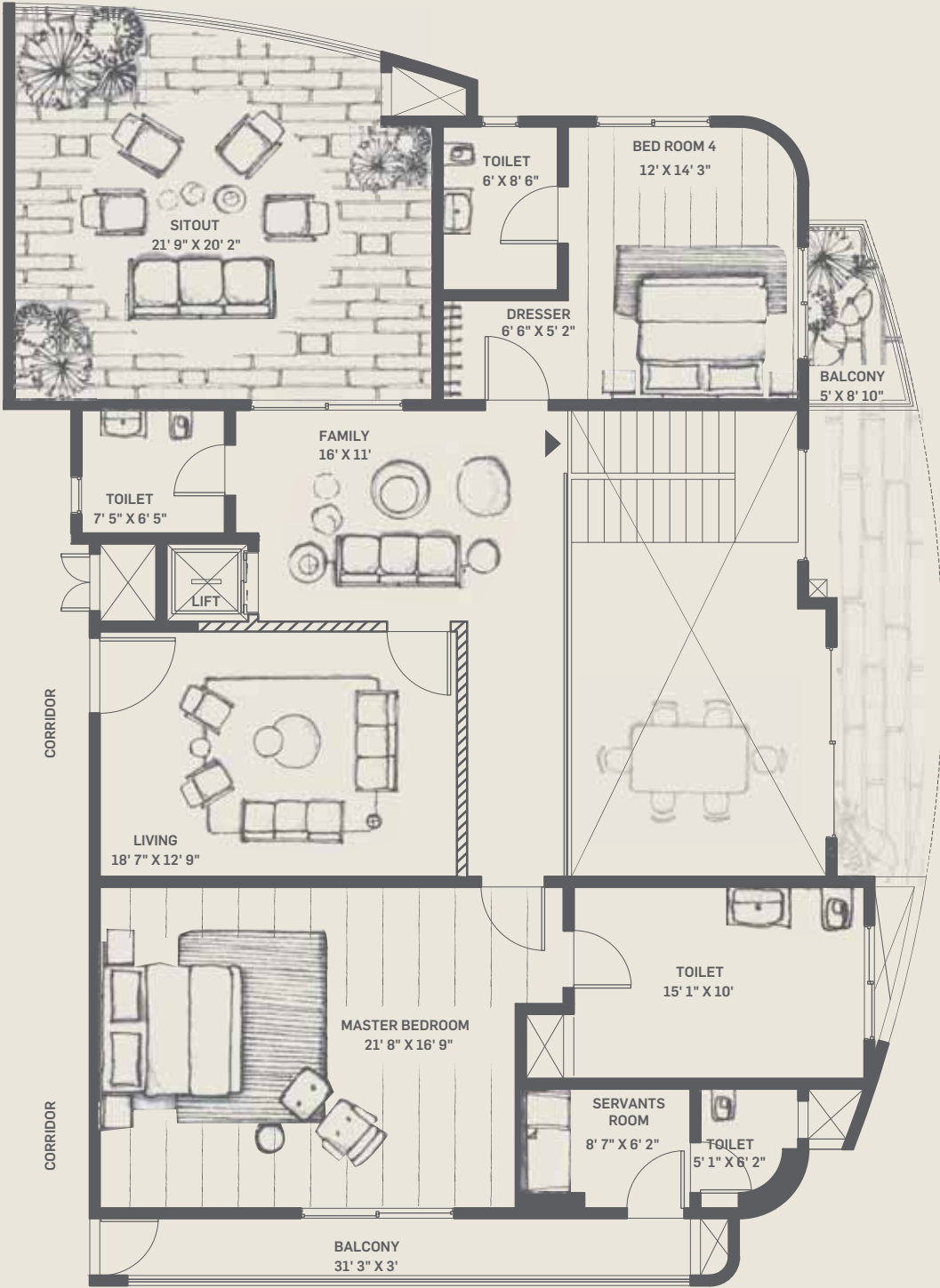
Type A

3381 sq.ft-Super-Built Area
2367 sq.ft-Carpet Area

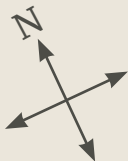




LOWER LEVEL

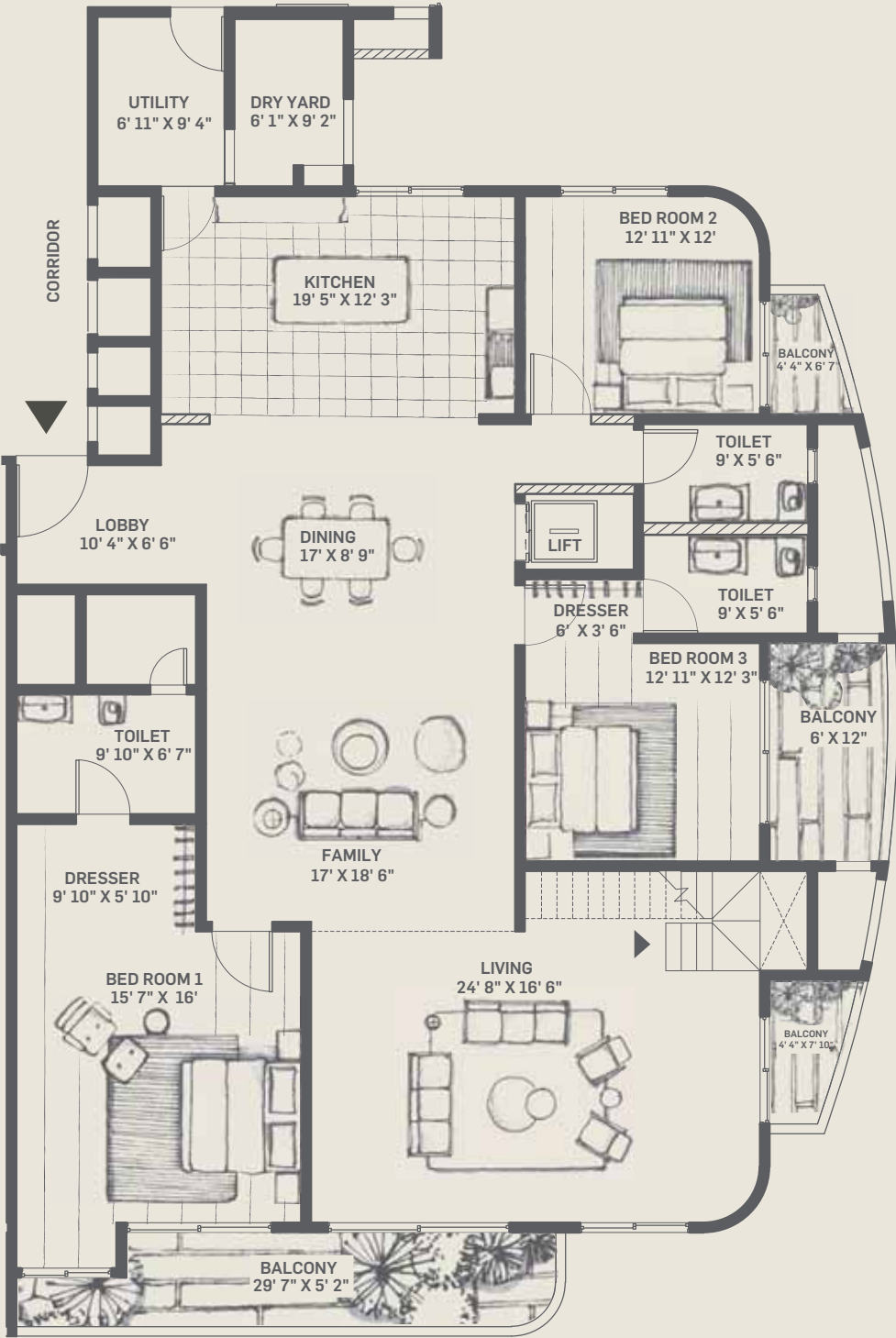


UPPER LEVEL

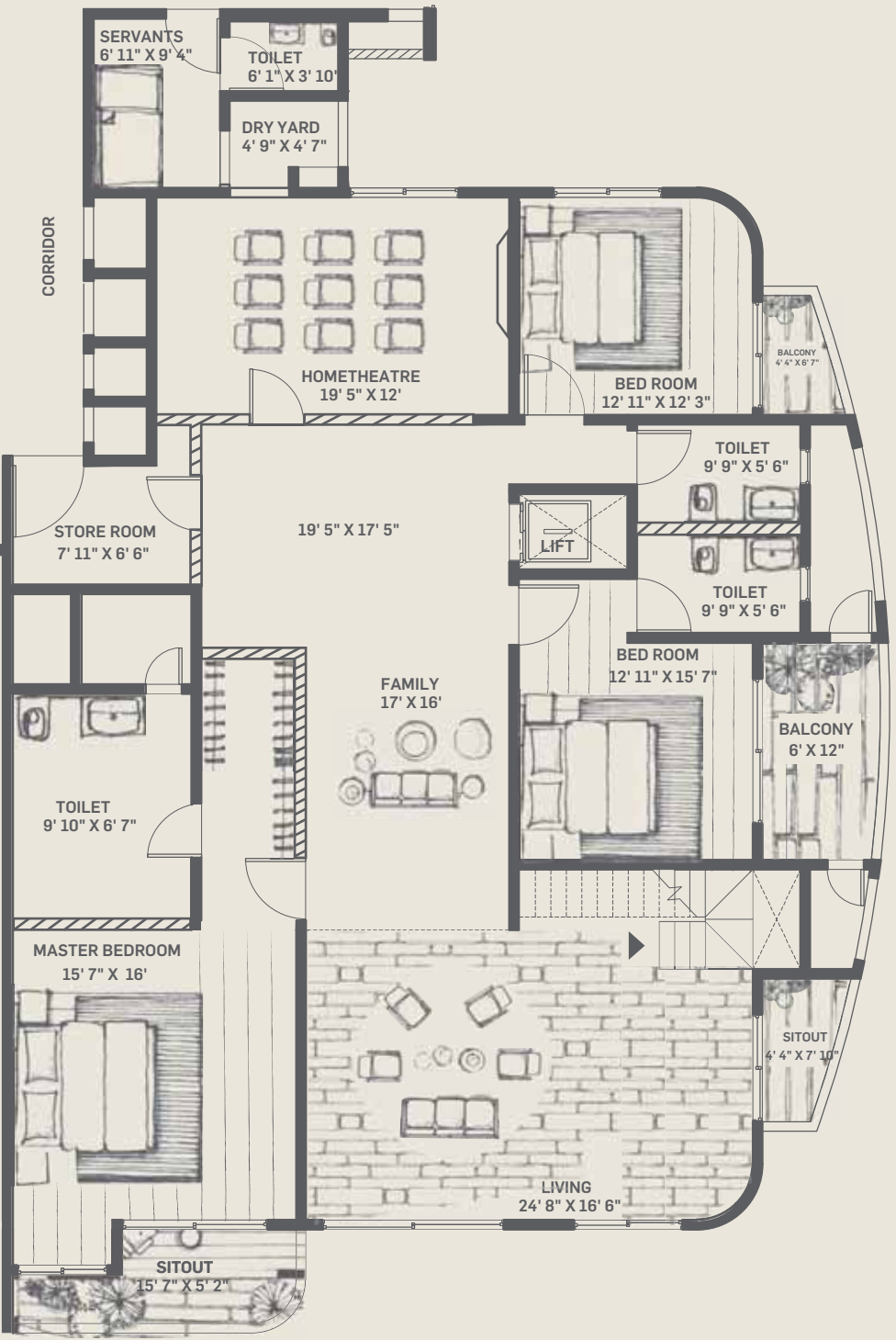


Praana - Type B Duplex (17th & 18th Floor)

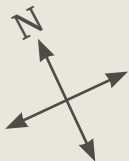
6264 sq.ft-Super-Built Area
4385 sq.ft-Carpet Area



LOWER LEVEL



UPPER LEVEL



Dhyana - Type C Duplex (17th & 18th Floor)

6794 sq.ft-Super-Built Area
4756 sq.ft-Carpet Area

OUTDOOR SPACES

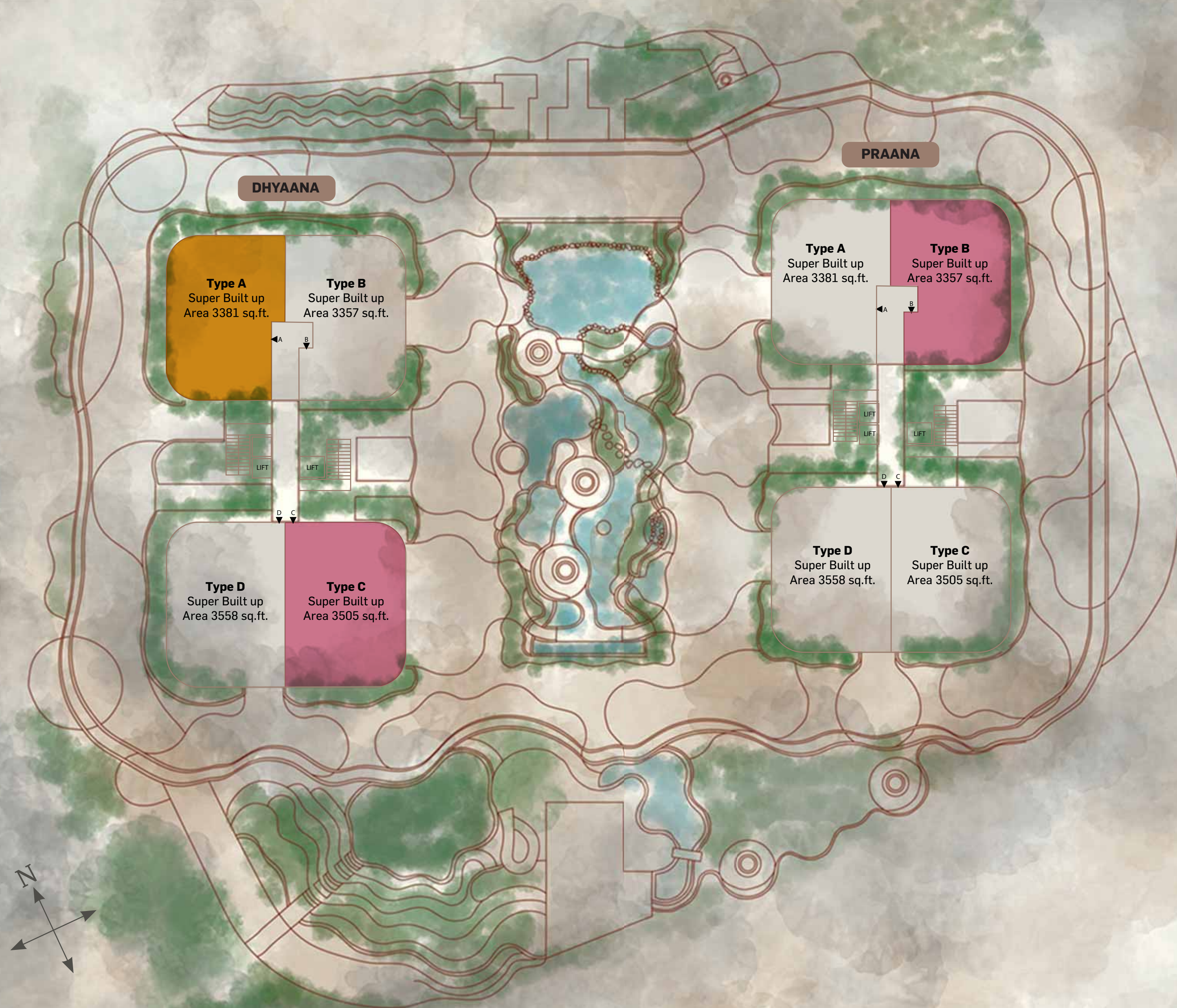
- 24-Hour Security
- 100-Seat Open Amphitheatre
- Tapovana Open Courtyard with Koi Pond
- Multipurpose Sports Court
- Outdoor Children's Play Area
- Walking Track
- Porte Cochere
- 4BHK with 2 Covered Basement Car Parks
- 5BHK with 4 Covered Basement Car Parks

APARTMENT FEATURES

- OC Received - Ready to Move. Over 90% already sold
- TWO Towers - Praana and Dhyana
- Ground plus 18 Floors
- Courtyard Home Design
- 10.7 ft High Ceiling for better air circulation
- 21 ft (double height) in Clubhouse spaces
- Four apartments per floor
- Panoramic View of Sri Ramakrishna Ashram and Kempambudhikere Lake
- Biometric Locks and Numeric options
- House Help Room with independent entry
- Reticulated Gas Connection
- 100% Power Backup
- Two Passenger Lifts plus One Service Lift for each Tower

COMMONHOUSE SPACES

- ✓ 40,000 sq. ft. area Commonhouse Space
- ✓ Double Height of 21 feet in all Commonhouse Areas
- ✓ Karya Work Lounge Co-Working Space
- ✓ Sattva Community Lounge
- ✓ Bodhi Library
- ✓ Krida Play Lounge (including Squash,
- ✓ Ancient Indoor Games, Billiards, Table Tennis)
- ✓ Vyayama Gym
- ✓ Asana Yoga Studio & Multi-Purpose Hall
- ✓ Leela Children's Play Area
- ✓ Vimaana Rooftop Infinity Pool & Bar Deck
- ✓ Neighbouring 14 acres of greenery of Sri Ramakrishna Math



DHYAANA

PRAANA

Type A
Super Built up
Area 3381 sq.ft.

Type B
Super Built up
Area 3357 sq.ft.

Type A
Super Built up
Area 3381 sq.ft.

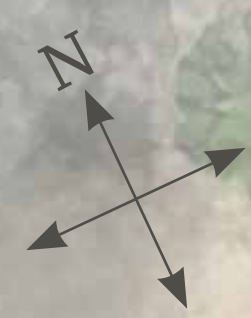
Type B
Super Built up
Area 3357 sq.ft.

Type D
Super Built up
Area 3558 sq.ft.

Type C
Super Built up
Area 3505 sq.ft.

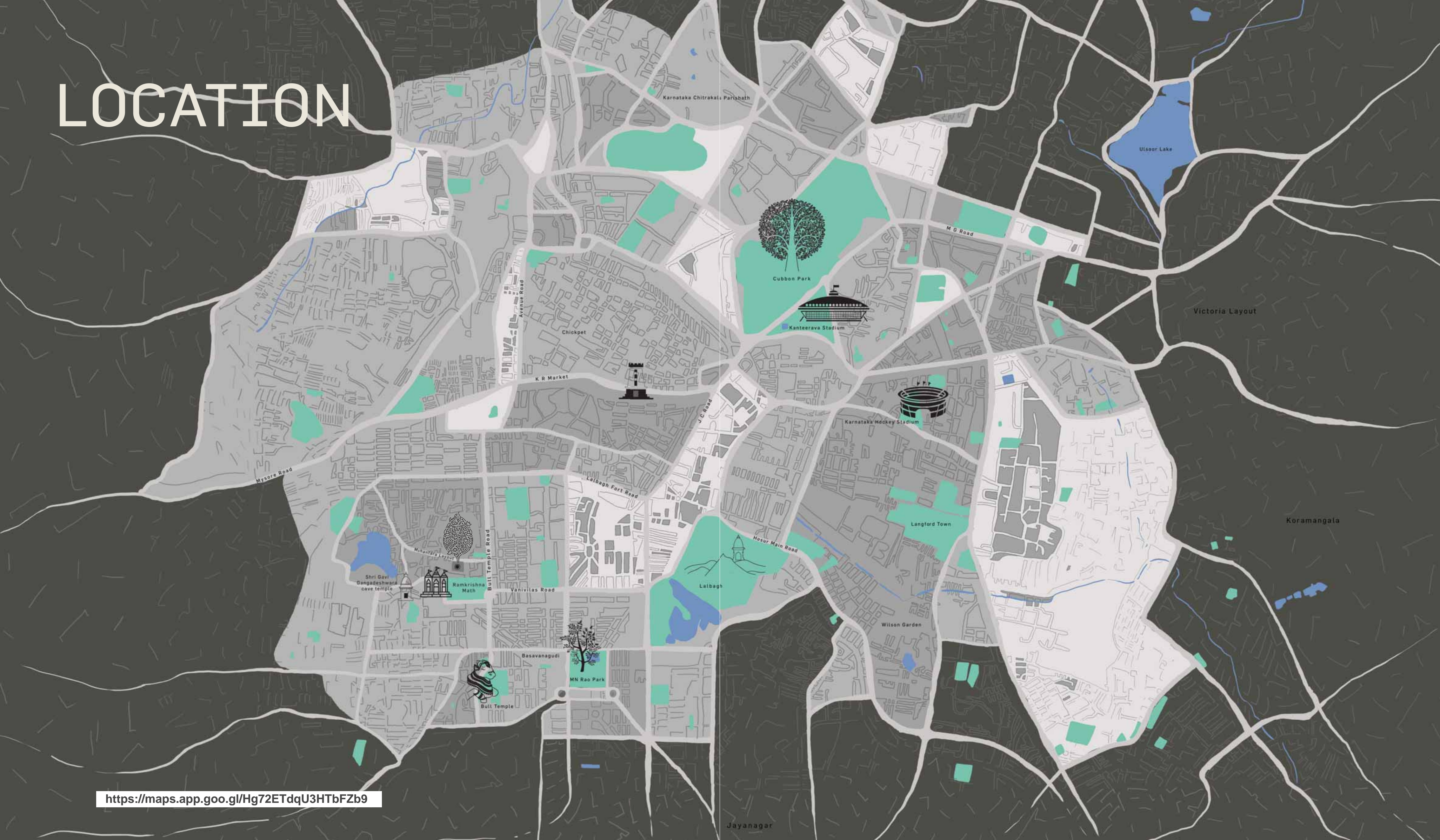
Type D
Super Built up
Area 3558 sq.ft.

Type C
Super Built up
Area 3505 sq.ft.



- Available 4 BHK
- Available Sky Villa

LOCATION



<https://maps.app.goo.gl/Hg72ETdqU3HTbFZb9>

The Legend of Basavanagudi

A long time ago, Basavanagudi was known as Sunkenahalli village famous for its groundnut fields. It was here that the foundation of Bengaluru's future was laid. As the altar of art, culture, and intellectualism, Basavanagudi emerged as one of the city's most important locations. Over the years this quaint place steeped in a magical tradition became the treasury of many stories told even today.

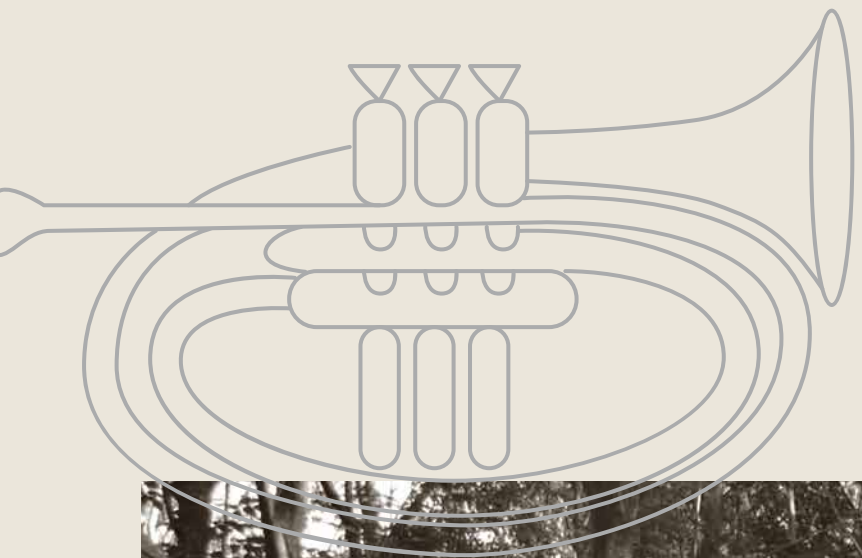
The Divine Bull

The story of the mysterious bull dates back many decades. Legend has it, the bull destroyed groundnut crops year after year. Upon such continuous frustration an enraged farmer struck the bull with a club, turning it into a statue. Later, as a tribute to this miraculous incident, the local farmers built The Bull Temple dedicated to the divine bull. The area became known as Basavanagudi (*Basava*: Bull; *Gudi*: Temple). A groundnut fair is still held every year in homage to this gloriously mystical legend.

Gavi Gangadhareshwara Temple

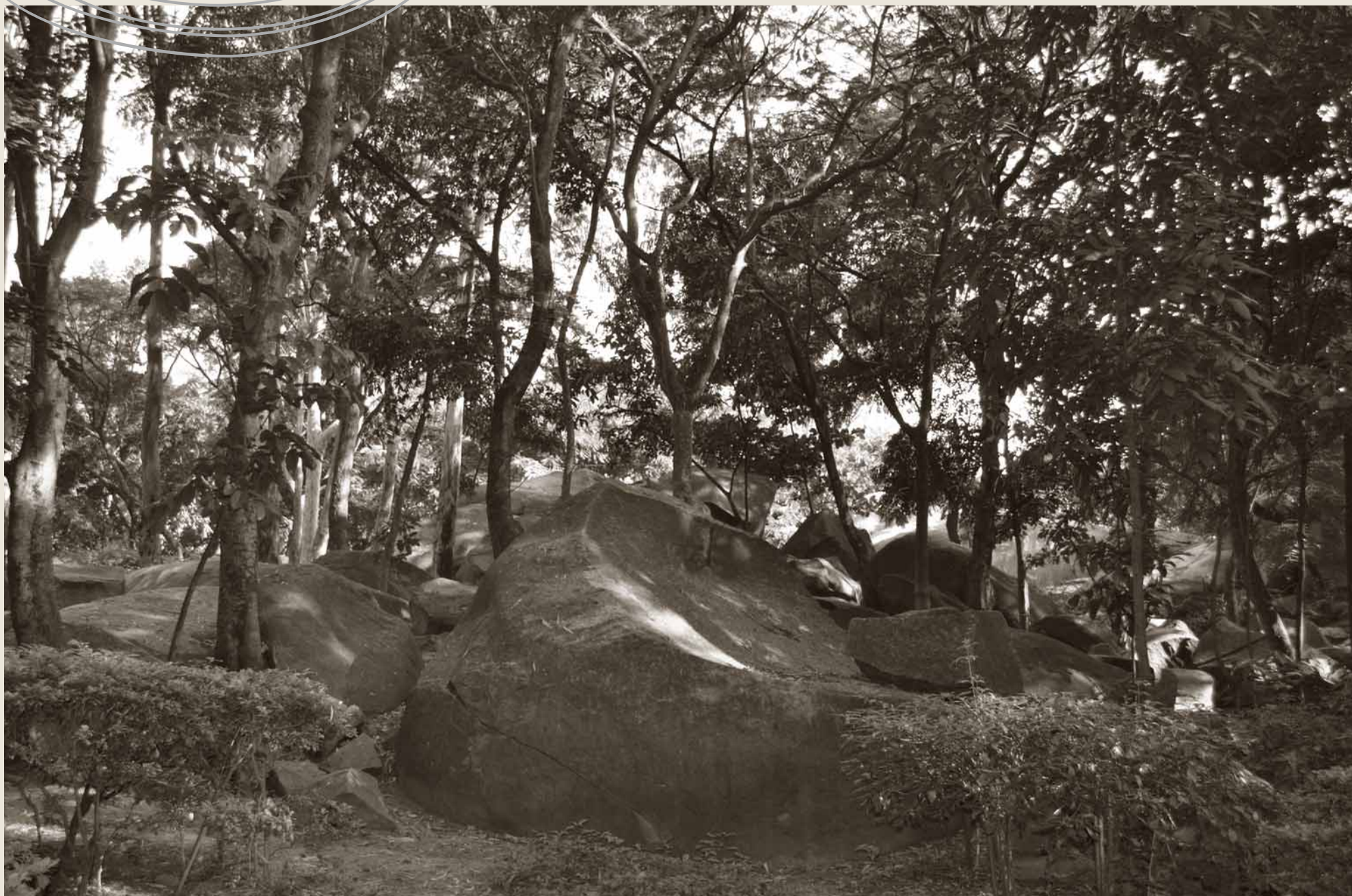
Built in the 16th century by Bengaluru's founder, Kempe Gowda, Gavi Gangadhareshwara is an architectural marvel and one of the city's oldest temples. Dedicated to Lord Shiva, the entire temple was carved out of a natural cave into a single monolith. Every year on Makar Sankranti a unique phenomenon is observed. The day's last sun rays pass through the arc between Nandi bull's horns and falls directly on the linga inside the temple's inner sanctum, illuminating it. An occurrence that remains inexplicable to this day.





Bugle Rock Park

Basavanagudi's Bugle Rock park holds the massive Bugle Rock believed to contain rocks dating back 3000 million years. Being one of the world's oldest land formations, Bugle Rock is a historical wonder and is recognized as one of 26 important geological monuments of India. An interest to cultural and archeological communities, Bugle Rock was an important checkpost long ago when sentries held torches and blew bugles to alert the citizens.



RK Narayan's Malgudi Days

Basavanagudi's rustic and picturesque backdrop brought inspiration to RK Narayan, writer of the classic Malgudi Days. He derived the word 'Malgudi' for his novel series from the word 'Basavanagudi'. Eventually, Basavanagudi became the hub of famous Kannada intellectuals, writers, and thought leaders of yesteryears.



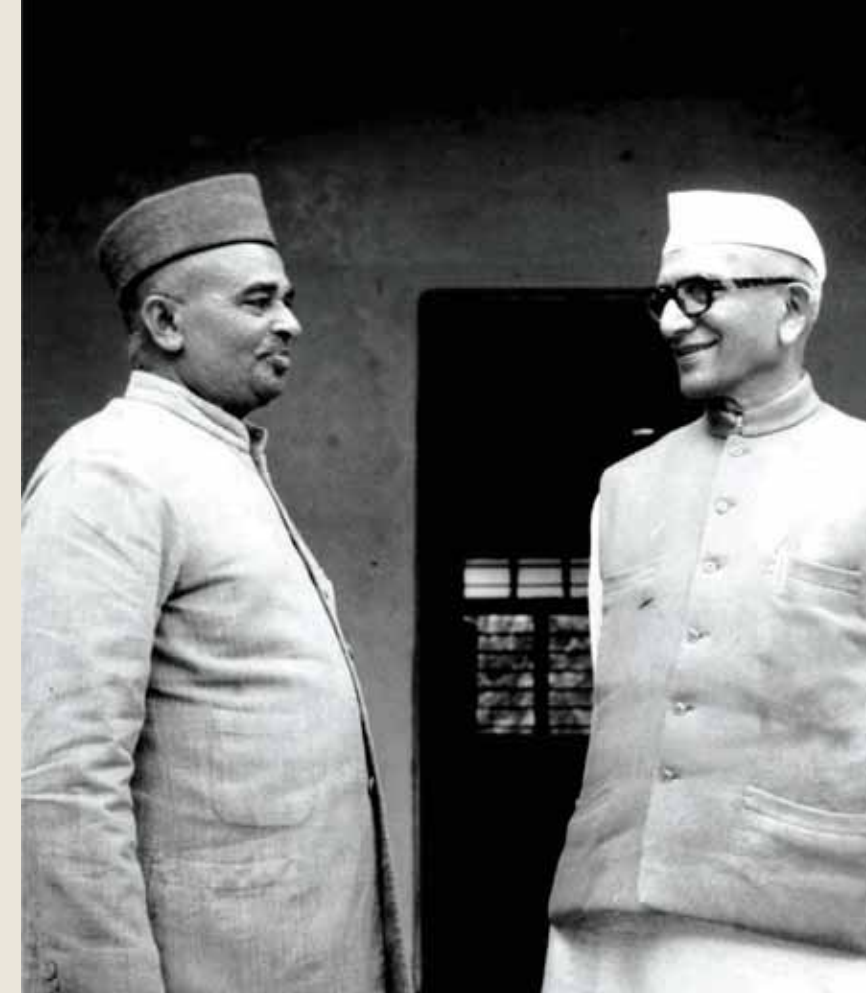
The Machani Legacy

With a rich heritage of nearly 80 years, Machani Group is one of India's most revered family businesses inspired by Machani Somappa, son of a master weaver in Yemmiganur who became one of the first Padma Shri recipients for his historic contributions to society. Rooted in unwavering values, Machani family's essence and existence have always been about taking everyone along. Building the economy while helping others has been the guiding principle of Machani legacy.



After a series of famines between 1934 and 1936, Machani Somappa established a weavers' society that brought together many weavers from neighbouring villages and grew to be the largest weavers' society in India. He also singlehandedly formulated the idea of cooperative spinning mills considered an engineering marvel back in the day. Introducing technology, engineering, and design for the first time in the industry led to the renaissance of Indian handloom. This period in history revived countless weavers and uplifted India's handloom from trenches of poverty and oblivion. The Machani principles of thinking ahead played a crucial role in popularizing the significance of weaver communities throughout the nation.

Machani Somappa founded several other pivotal ventures to empower the underprivileged by creating employment and a new lease of life. From building cooperative societies and successful businesses to non-profit organizations, Machani Somappa's dedication towards the greater good, perseverance in the face of hardships, and exemplary leadership provided the bedrock on which Machani Group stands. Leadership, according to him, was a role of immense responsibility and an opportunity to serve others. His favourite saying "Together is better" still resonates in every endeavour, big or small.



With a strong foothold in the manufacturing sector, the group has made expansions into various sectors such as Real Estate, Virtual Reality, Hospitality, Defence Manufacturing, Electric Vehicle Platform, Artificial Intelligence, Apparel and Information Technology Enabled Services.



The Story of The SVASA Land

The story of the land began nearly 50 years ago. Being one of the only remaining stretches of unadulterated green acres in South Bengaluru, it was a precious treasure locked in the Machani family's vaults for years. The family has always given birth to exemplary visionaries who value leadership, innovation, and selfless thinking. A tribute to three generations, the land was passed on as a gift to the next generations by the family's founding fathers. Harbours an electronics factory earlier, the land came back to the family in the year 1984 with a new destiny. Standing on the land again was a special feeling, akin to standing on the shoulders of giants.

In celebration of ancestral memories, the family wished to acknowledge the forefathers' hard work by building a marvel that inspired awe. The land was clearly meant for a higher purpose. To pay respect to this legacy, Svasa Homes was envisioned as a living community reserved for an exclusive league of individuals.



*Om Asato Ma Sadgamaya
Tamaso Ma Jyotirgamaya
Mrityor Ma Amritamgamaya
Om Shanti Shanti Shanti*

Lead me from unreality to absolute truth
Lead me from darkness to light
Lead me from death to eternal immortality
May peace, peace, and only peace prevail.

The Brihadaranyaka Upanishad, regarded as the largest Upanishad, contains the above shloka, also known as Pavamana mantra, which is one of the most important invocations for inner peace and wellbeing.



svasa[®]
H O M E S

Svasa Homes was built to inspire a vibrant and powerful community.
Come and discover this unique feeling in the heart of Basavanagudi.

GET IN TOUCH WITH US

Phone

+91 9900423057

Email

jsridhar@jsridhar.com

**For more information on
availability and site visit,
contact me on the above
number or email.**

**Sridhar Jayaraman
Bengaluru, India**